



DERBYSHIRE'S
— *Village and Country* —

The Pool House Shepherds Lane, Chard,
Somerset, TA20 1QU

Spacious & Modern 3 Double Bedroom Bungalow – Walking Distance to Chard Town Centre

A superb opportunity to purchase this beautifully presented and spacious purpose-built 3 double bedroom bungalow, ideally located within walking distance of Chard town centre and all local amenities.

This modern home boasts a stylish and versatile open-plan living, dining, and kitchen area, perfect for family life and entertaining.

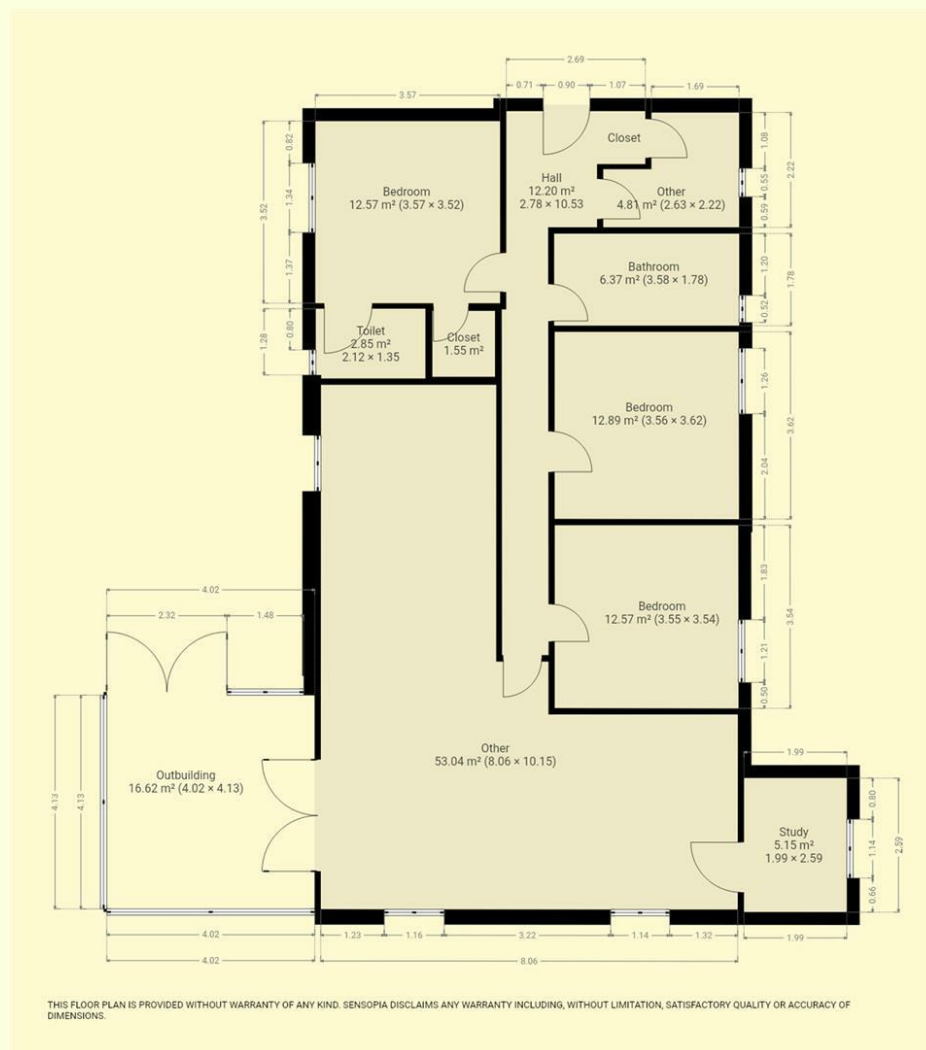
A separate study provides an ideal space for home working, while the utility room adds practical convenience.

The master bedroom benefits from a private en-suite, with two further generous double bedrooms served by a contemporary family bathroom. A conservatory extends the living space and overlooks the enclosed rear garden, providing a peaceful retreat. Externally, the property offers a garage with power and lighting, plus an electric gated driveway for secure off-road parking.

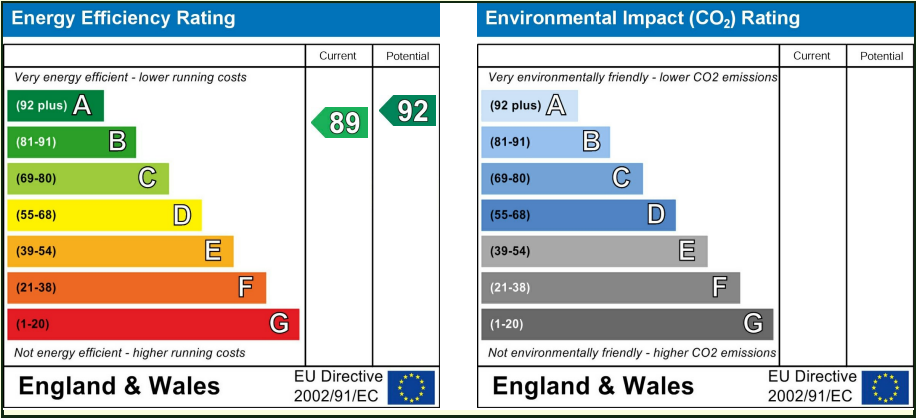
An ideal home for families or those looking for single-level, low-maintenance living with modern comfort and convenience. Early viewing highly recommended.

Spacious, modern bungalow
Three double bedrooms

- Open-plan living/dining/kitchen
- Study & utility room
- En-suite to master & family bathroom
- Conservatory
- Enclosed rear garden
- Garage with electric & light
- Electric gated driveway
- Walking distance to Chard town centre



The Pool House Shepherds Lane, Chard, Somerset, TA20 1QU
£425,000





DERBYSHIRE'S
— Village and Country —

11, High Street, Chard, Somerset, TA20 1QF
www.derbyshires.net 01460 63600